



PORTFOLIO

Ryan Glidden
LANDSCAPE DESIGN AND CONSULTING

4167 TWILIGHT RIDGE
SAN DIEGO CA. 92130

www.rglanddesign.com

e: rglanddesigner@gmail.com

p: 619.804.5203

CONTENTS.

01 CORTE FAVOR

A modern low maintenance yard with greater curb appeal and functionality

02 AVENIDA ANACAPA

Maximizing a small space to entertain and enjoy with a mediterranean influence.

03 INVERNESS DRIVE

Working with challenging elevations and lot layout to achieve clients outdoor dreams

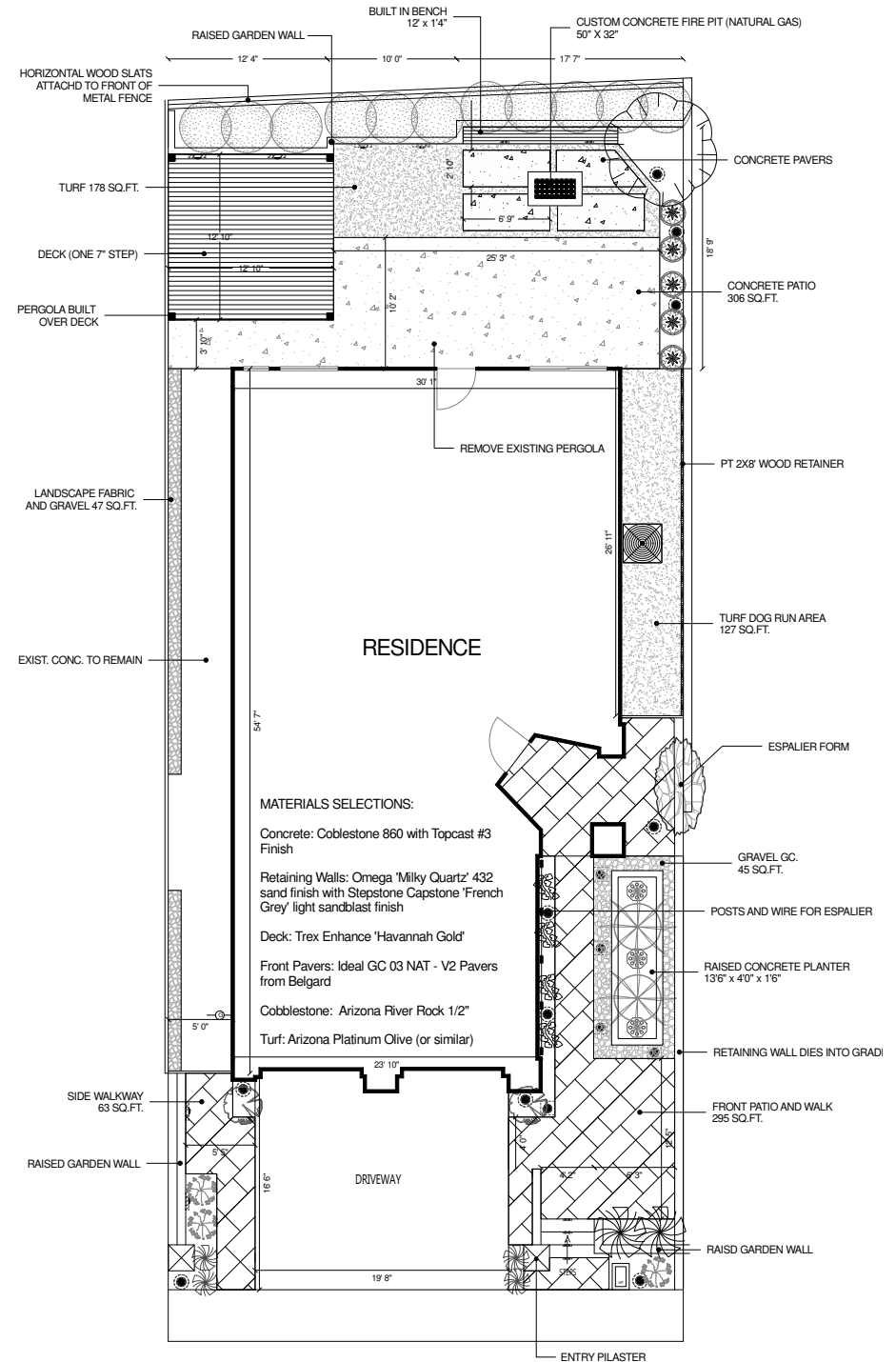
04 BACKGROUND

01 CORTE FAVOR.



This Carmel Valley home was in need of a makeover. A dead lawn and overgrown shrubs were killing the curb appeal. The design challenge was to create a clean, modern look that still made sense with the architecture of the home. They wanted to have a more direct access to the front door from the street that was welcoming and interesting. Low maintenance was a top priority as well.

A new entry landing and patio were added. A raised planter with low maintenance succulents and landscape lighting created a more appealing entrance. In the back we added a fire pit, built in seating and a pergola cover for relaxing and entertaining.

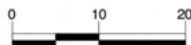
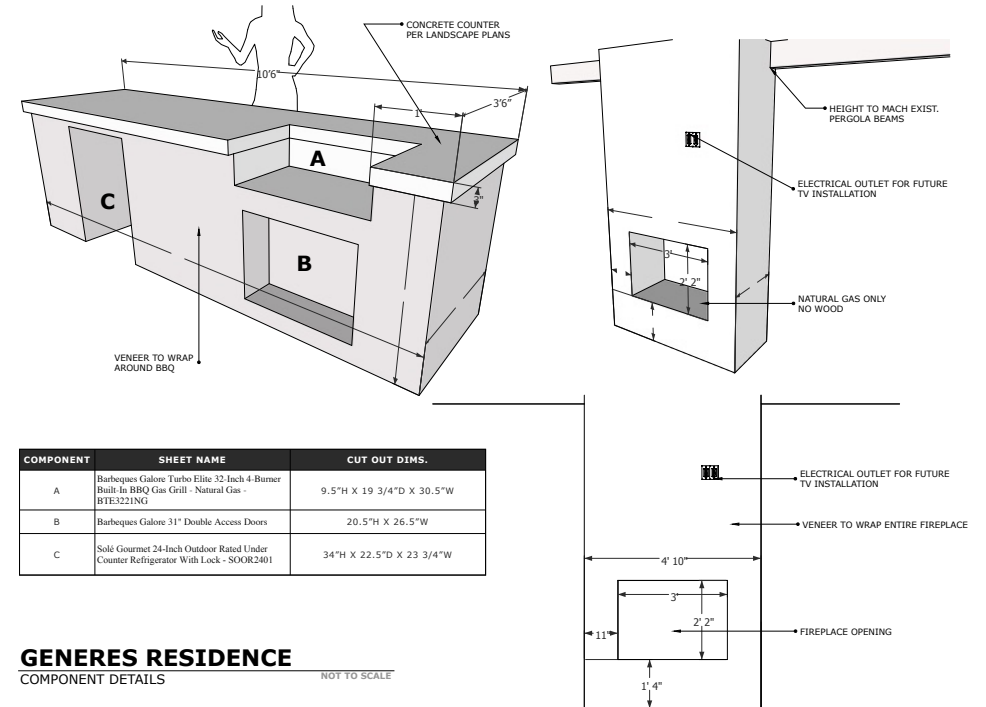


02 AVENIDA ANACAPA.

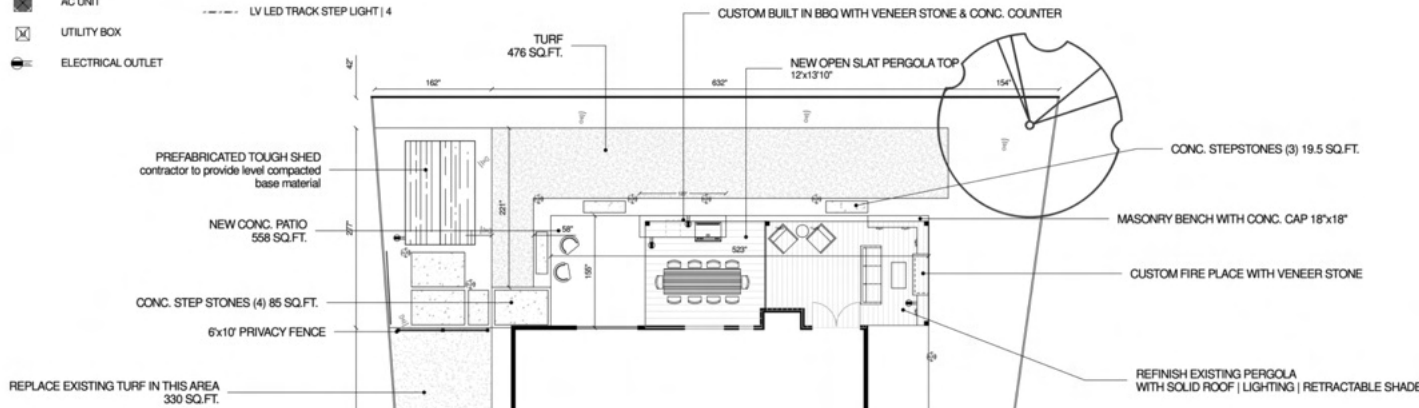


This young family was trying to maximize their outdoor living space. They had an existing pergola and a long narrow yard that just wasn't being used. The design challenge was to create more usable outdoor space that had a strong mediterranean feel.

An outdoor fireplace and custom seating area were build into the existing pergola. We kept the pergola footprint but redesigned it to be a solid roof with recessed lighting and tongue and groove wood paneling. A new build in BBQ with veneer stone face and and extended open slat pergola connected the spaces together rover the new concrete patio. The yard space was expanded by adding a turf area behind the seating for activities. A future outdoor office space was designed into a previously unused space in the yard.



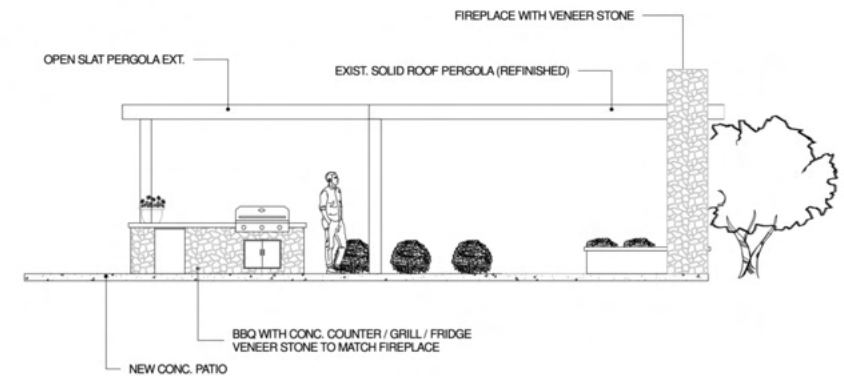
- TRASH CAN
- GAS METER
- AC UNIT
- UTILITY BOX
- ELECTRICAL OUTLET
- LV SPOT LIGHT | 10
- LV PATH LIGHT | 9
- LV WALL CAP LIGHT | 6
- LV LED TRACK STEP LIGHT | 4



HARDSCAPE CONCEPT

SOUTH ELEVATION

SCALE: 1/4" = 1'



BACKGROUND

I began my landscape career unofficially when I took a job working at Surfing Hydrangea plant nursery in Nantucket MA, in 2001. I spent the next four summers on that island learning about plants and plant installations.

After graduating from college, with a degree in fine arts, I moved to San Diego and started working in the maintenance division for The Brickman Group, a national landscape company. I soon transitioned to landscape installations, which is where I started my first designs.

Eager to expand into more creative spaces, I left Brickman to work for Green Gardens Landscape & Design, where I designed and installed landscapes in and around the greater San Diego area.

Unlike many other designers, my experience in the field gives me a unique perspective at understanding what works on paper and what works in reality. This perspective allows me to better help my clients, and the companies they hire, to complete their installations.

I'm passionate about creating unique, functional and beautiful landscapes. I love to build, to get my hands dirty and to create spaces that clients can truly enjoy.

